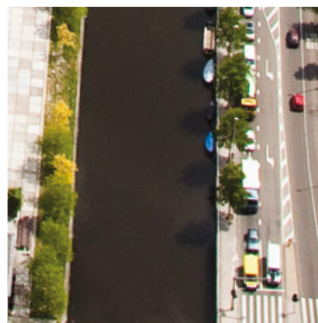




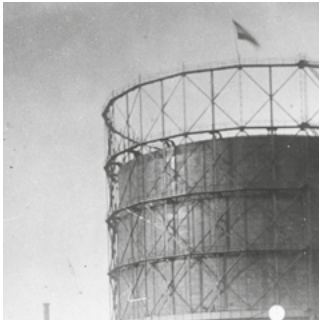
Wester gas fabriek

The Westergasfabriek is a meeting place for enterprising people with refreshing ideas. This beautiful city park featuring historic factory buildings offers a combination of beautiful open-air surroundings, places to work and a wide range of facilities for food & drinks, film & theatre and exhibitions. Thanks to its ideal blend of atmosphere, people, the park and the stunning indoor spaces, the Westergasfabriek feels like a village at the heart of the city.



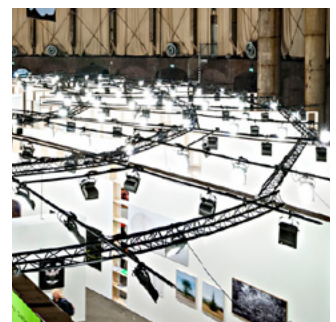
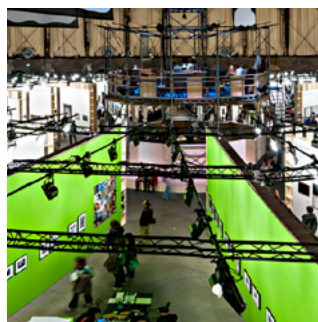
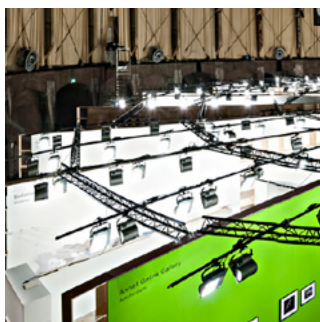
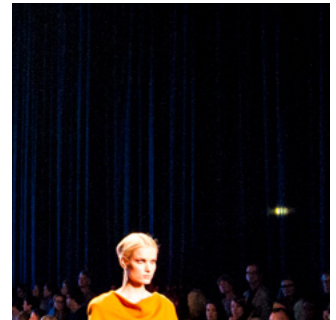
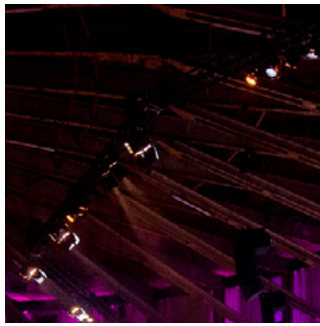
Westergasfabriek
Events Team
+31 (0)20-586 07 10
events@westergasfabriek.nl
www.westergasfabriek.com





Gashouder

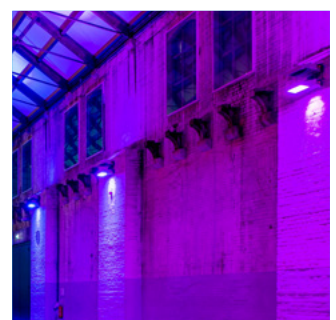
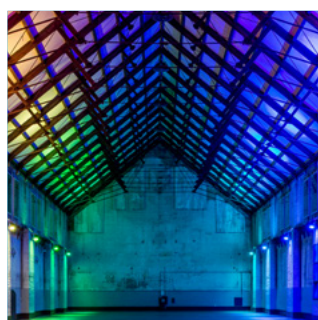
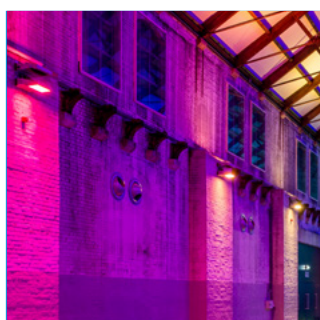
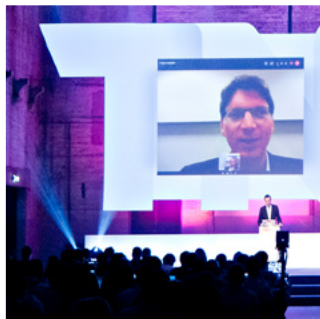
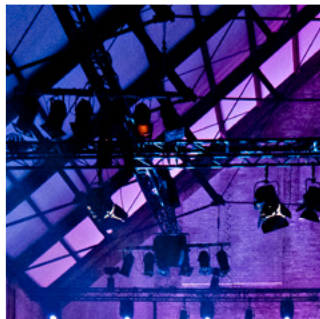
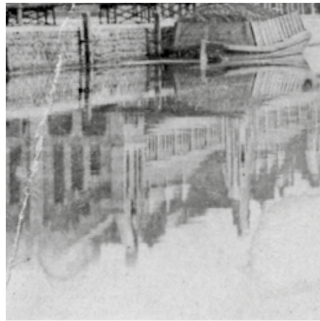
The Gashouder (Gasholder) is the most iconic building on the site. A beautiful circular space covering more than 2500 m², offering all the room you need. The pillarless interior, with its impressive cast-iron ceiling, is a unique example of its kind. Click [here](#) for more photos.

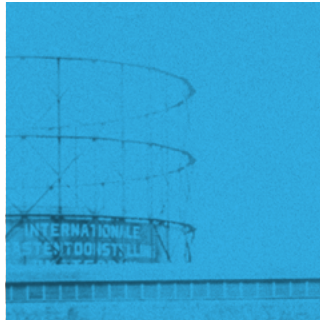




Zuiveringshal West

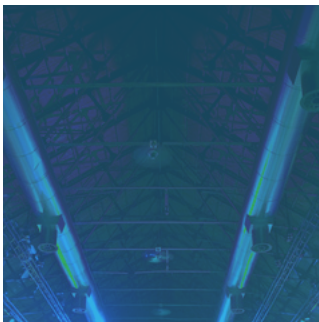
The Zuiveringshal West (West Refinery) is a long, tall building with weathered walls and a monumental roof construction. It can easily accommodate large numbers of guests for dinners, corporate presentations and exhibitions. The location also has a based LED-lighting connection. Click [here](#) for more photos.





Transformatorhuis

The Transformatorhuis (Trafo House) is an iconic space with an unusual wooden roof construction and high, narrow windows. It is ideal for a nightclub-type interior or long tables set for a dinner in style. The location is also often used as a conference hall and has a based LED-lighting connection. Click [here](#) for more photos.



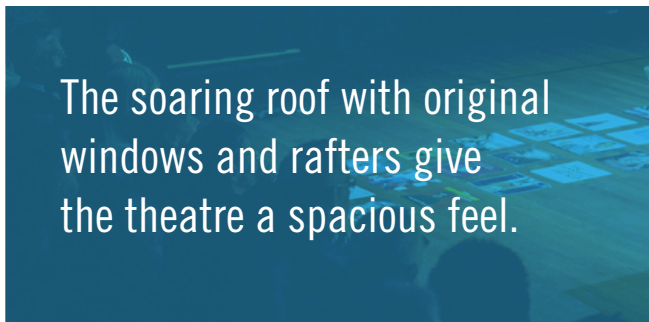
The lengthy space is ideal for a nightclub-type interior or long tables set for a dinner in style.



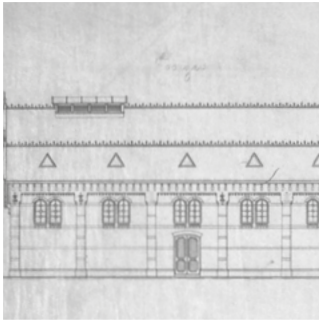


Westergastheater

The Westergastheater (Westergas Theatre) is a modern theatre with an airy foyer and a stunning tall ridged roof. The auditorium offers good basic light and sound equipment and has a stage with collapsible walls and tribune. Its flexible layout makes it ideal for a range of different events. Click [here](#) for more photos.

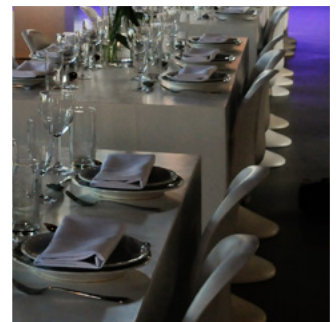
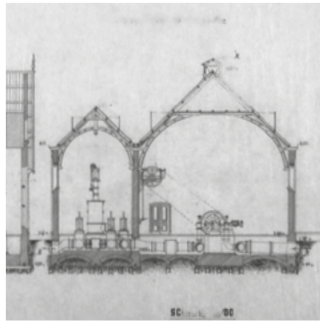
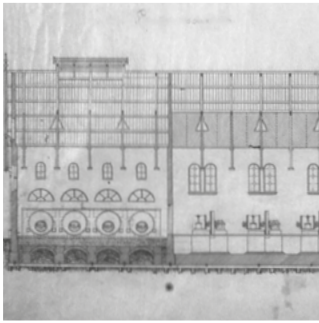


The soaring roof with original windows and rafters give the theatre a spacious feel.



Machinegebouw

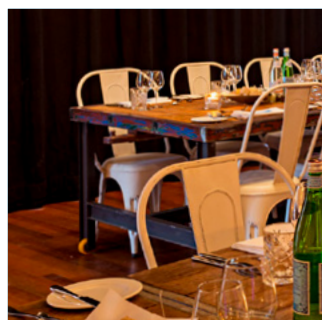
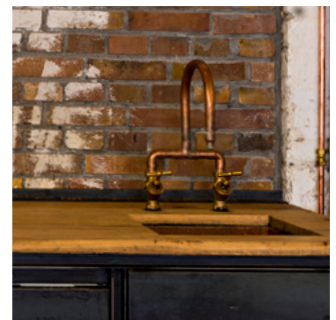
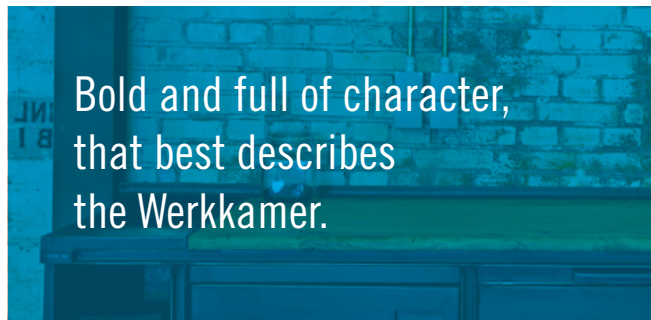
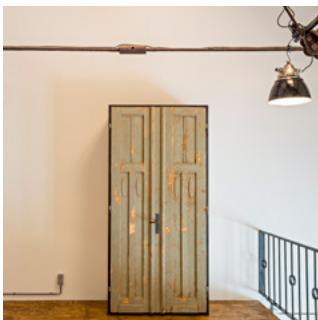
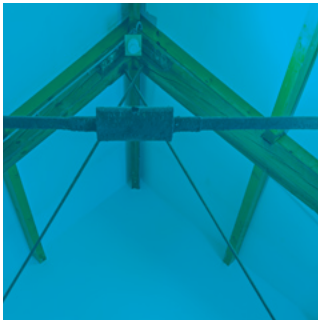
The Machinegebouw (Machine Building) is one of the smaller buildings on the site. It has a light hall with a wooden roof and a smaller annex room known as the 'Chapel'. The location offers good basic light and sound. It is suitable for presentations and dinners, as well as exhibitions and parties. Click [here](#) for more photos.





Werkkamer

The Werkkamer (Work Room) is bold and full of character. It can be used flexibly for meetings, training sessions, break-out sessions, workshops or as temporary office space. Thanks to a shared entrance the Werkkamer is an ideal combination with the Westergastheater. Click [here](#) for more photos.





Leidinghuis

The Leidinghuis (Pipeline House) consists of two semicircular extensions to the Gashouder. Dutch Designer Piet Hein Eek transformed the Leidinghuis into a rugged and distinctive apartment with every comfort. It is ideal for brainstorming sessions, meetings or workshops. Click [here](#) for more photos.



A rugged and distinctive setting for smaller groups wanting to come up with something special.

