

Amsterdam Conference Centre



0.5 Graanbeurszaal

History

Grain Traders traded large quantities of grain that was imported from far away. To be able to sell this in the Netherlands, they needed a fair where they could negotiate: the Graanbeurszaal (Corn Exchange Hall). After World War II, with the arrival of telex and telephones, the grain traders no longer needed the Exchange for their transactions. The Food Fair with its canned vegetables was therefore added to the Graanbeurszaal until 1960. The Graanbeurszaal housed a permanent exhibition for industrial design until 1976, after which the first options exchange in the world was established here. From 1987 to 2014, the Graanbeurszaal was used for rehearsals of the Chamber Orchestra of the Dutch Philharmonic Orchestra.

Hall specifications

Dimensions in m: 37.5 m x 18.5 m
 Dimensions in ft: 123 ft x 60 ft 8 in
 Surface: 700 m² / 7,535 ft²

Technical specifications

Projector: Panasonic PT RZ13K (laser)
 Resolution: 1,920 x 1,200
 Ansilumen: 12,000
 Ratio: 16:9

Projection screen: 650 x 370 cm / 256 x 146 inch

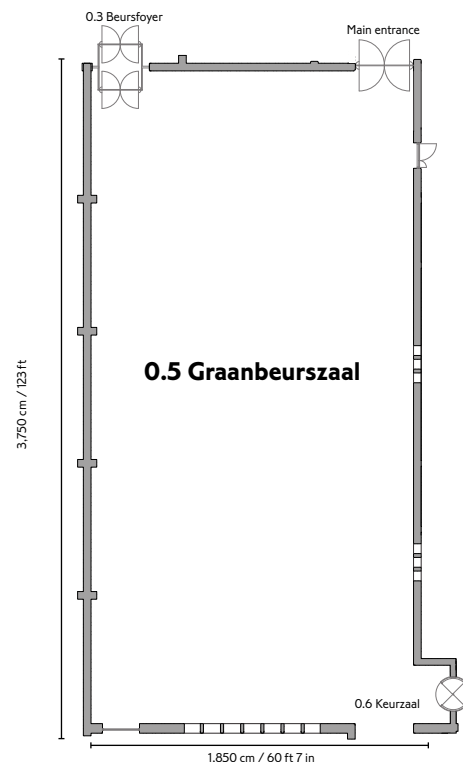
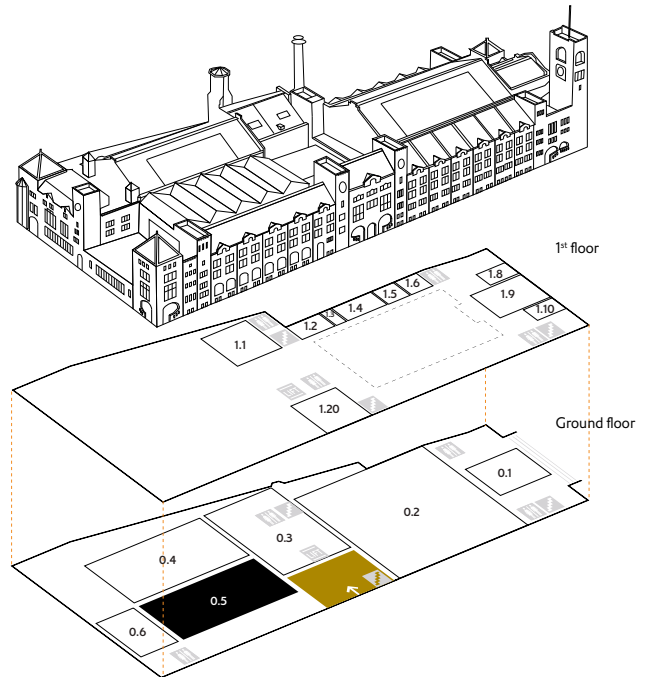
Sound: MAIN PA: 8 x Meyer Sound Mina loudspeaker (per side)
 Processor: Xilica Neutrino XD-4080
 PA Mixer: Allen & Heath QU16

Light: 20 x Robe LED Wash 300+
 20 x Fresnel spot LED RGBW
 4 x LED zoom profile spot
 HES Hedge Hog 4

Setting

N° of persons

| | |
|--------------------|-----|
| Theatre: | 800 |
| Cabaret: | 400 |
| School: | 400 |
| Square: | 100 |
| U-shape: | 85 |
| Reception & party: | 700 |
| Dinner: | 500 |



BEURS VAN BERLAGE