

# Amsterdam Conference Centre



## 0.4 Effectenbeurszaal

### History

In 1903, the Stock Market took the Effectenbeurszaal (Stock market hall) in use. From that moment on, stocks and bonds were traded here daily. Until 1912, when the Exchange received its own building next to the Beurs van Berlage at Beursplein 5. After the departure of the Stock Exchange, the Effectenbeurszaal served as currency exchange and transfer office in Amsterdam. In 1985 the Dutch Philharmonic Orchestra (NedPhO) started using both the Graanbeurszaal and the Effectenbeurszaal. The Effectenbeurszaal was converted into a concert hall and acoustically improved to an excellent concert experience. In 2012 NedPhO moved to Majella Church in Amsterdam East. The stage was removed, but the hall retained its improved acoustics.

### Hall specifications

Dimensions in m: 37.5 m x 18.5 m  
 Dimensions in ft: 123 ft 3 in x 60 ft 8 in  
 Surface: 700 m<sup>2</sup> / 7,535 ft<sup>2</sup>

### Technical specifications

Projector: Panasonic PT RZ13K (laser)  
 Resolution: 1,920 x 1,200  
 Ansilumen: 12,000  
 Ratio: 16:9

Projection screen: 650 x 370 cm / 256 x 146 in

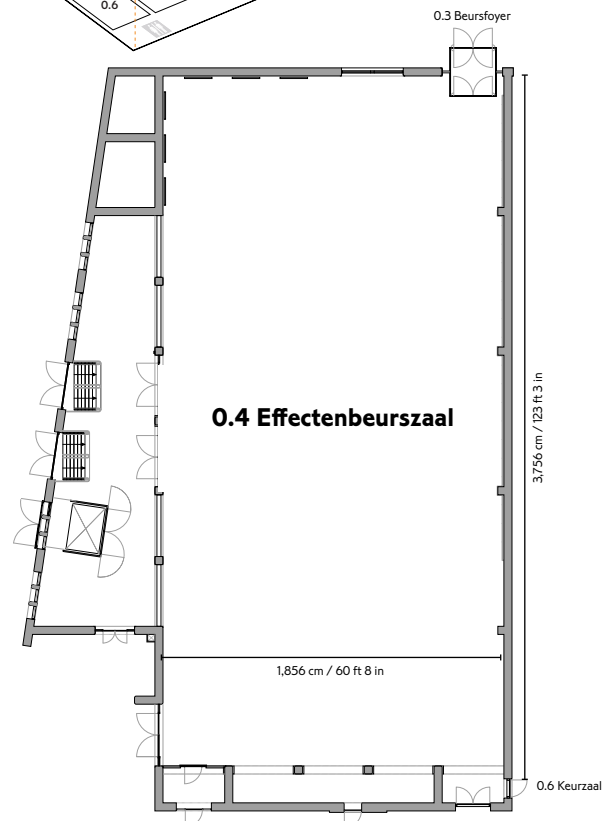
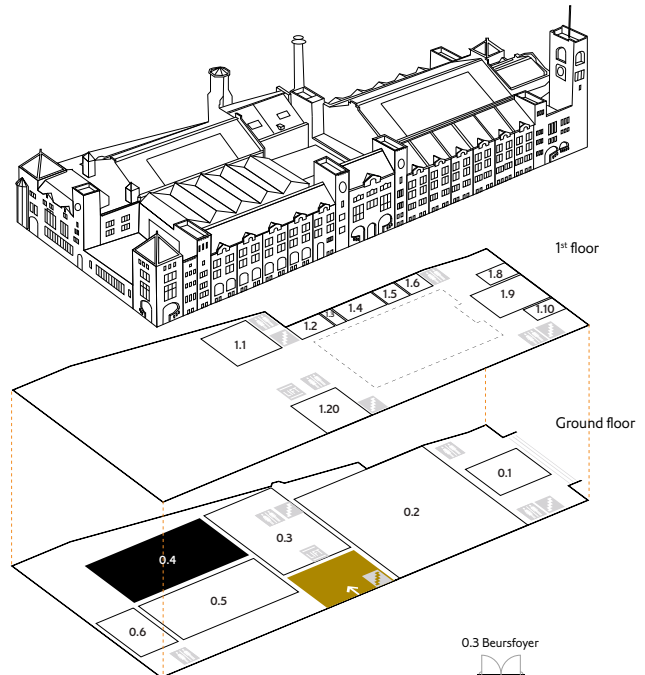
Sound:  
 MAIN PA: 8 x Meyer Sound Mina loudspeaker (per side)  
 Processor: Xilica Neutrino XD-4080  
 PA Mixer: Allen & Heath QU16

Light:  
 20 x Robe LED Wash 300+  
 18 x Fresnel spot LED RGBW  
 4 x LED zoom profile spot  
 HES Hedge Hog 4

### Setting

### N° of persons

Theatre:	800
Cabaret:	400
School:	400
Square:	100
U-shape:	85
Reception & party:	700
Dinner:	500



# BEURS VAN BERLAGE